



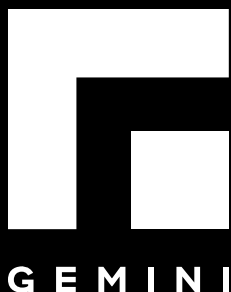
**G E M I N I**



# WHO WE ARE...

Gemini Builds It is a 50,000 square foot, full-service manufacturing facility and we specialize in multiple applications, engineering processes, and materials.





## ENVIRONMENTS

8-27

Wall Coverings & Windows

Signage & Wayfinding

Visual Merchandising

Gallery Walls

Art Sourcing & Curation

## FRAMING

28-41

High Volume Frame Production

Framing Supplies

Custom Framing

Specialty & Volume Mats

Mirrors

## ACRYLIC FABRICATION

42-65

Cut-To-Size Acrylic

Sandwich Frames & Hardware

Acrylic Décor

Acrylic Cases & Vitrines

Custom Acrylic Brackets

Sneeze Guards & PPE

## WOOD FABRICATION

66-73

Pedestals

Custom Millwork

## MORE CAPABILITIES

74-93

Corporate Gifts & Recognition

Etched Business Cards

Laser Cutting & Engraving

Wide Format Printing

Printed Acrylic

Digital Restoration

Custom Trays

Packaging

## FINAL MILE

94-101

Packing, Shipping & Crating

White Glove Delivery

Installation

## PORTFOLIO

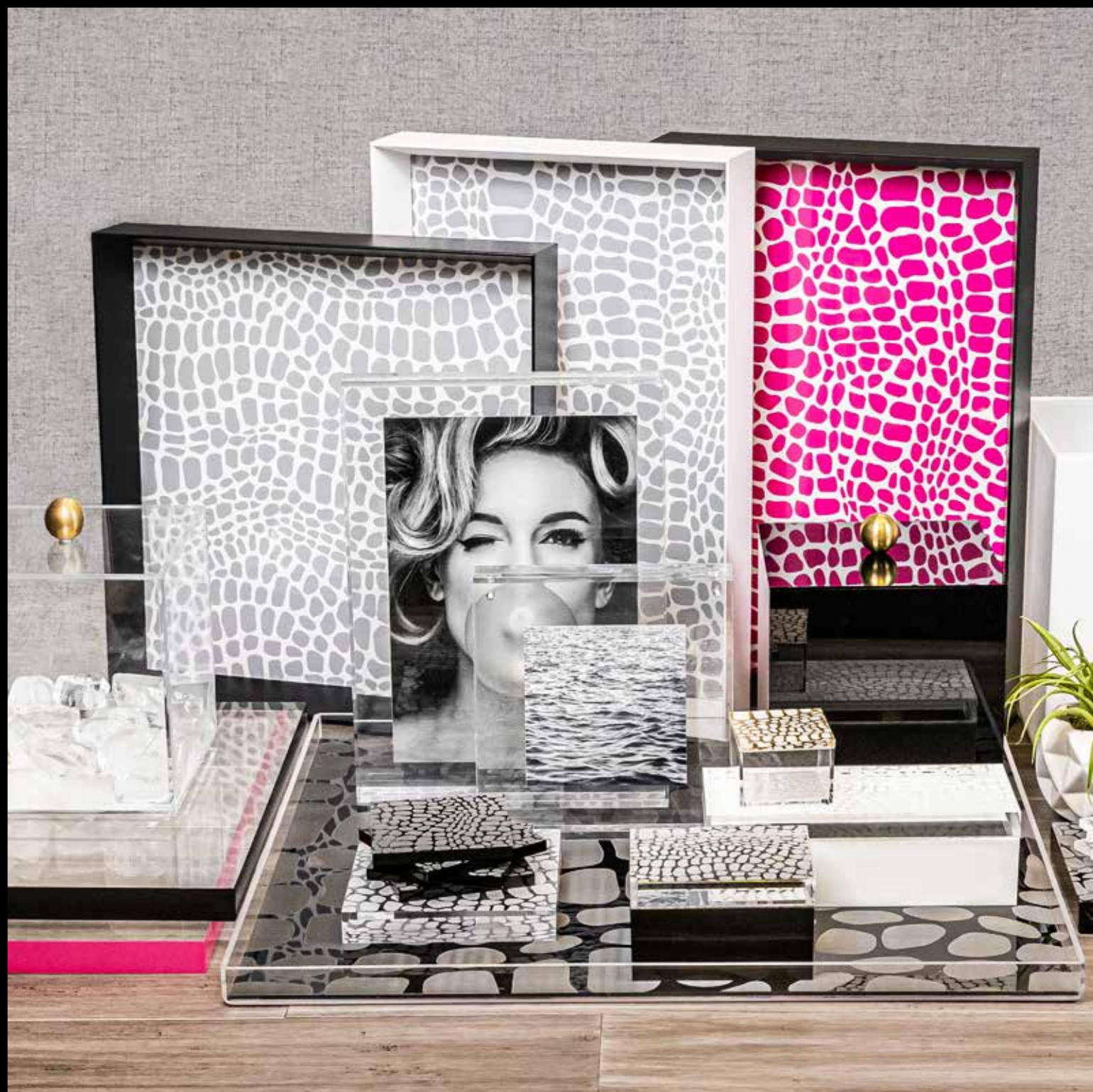
102-111





# MARKETS SERVED

- ➡ E-Commerce
- ➡ Design Trade
- ➡ Corporate
- ➡ Galleries & Museums
- ➡ PPE & Health Care
- ➡ Hospitality & Events







# ENVIRONMENTS

---



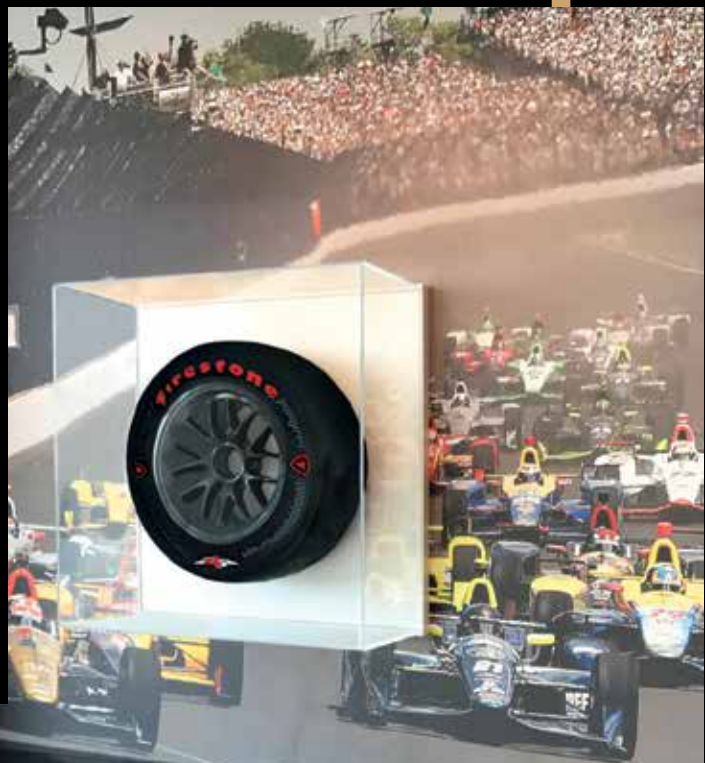
Wall Coverings & Windows

Signage & Wayfinding

Visual Merchandising

Gallery Walls

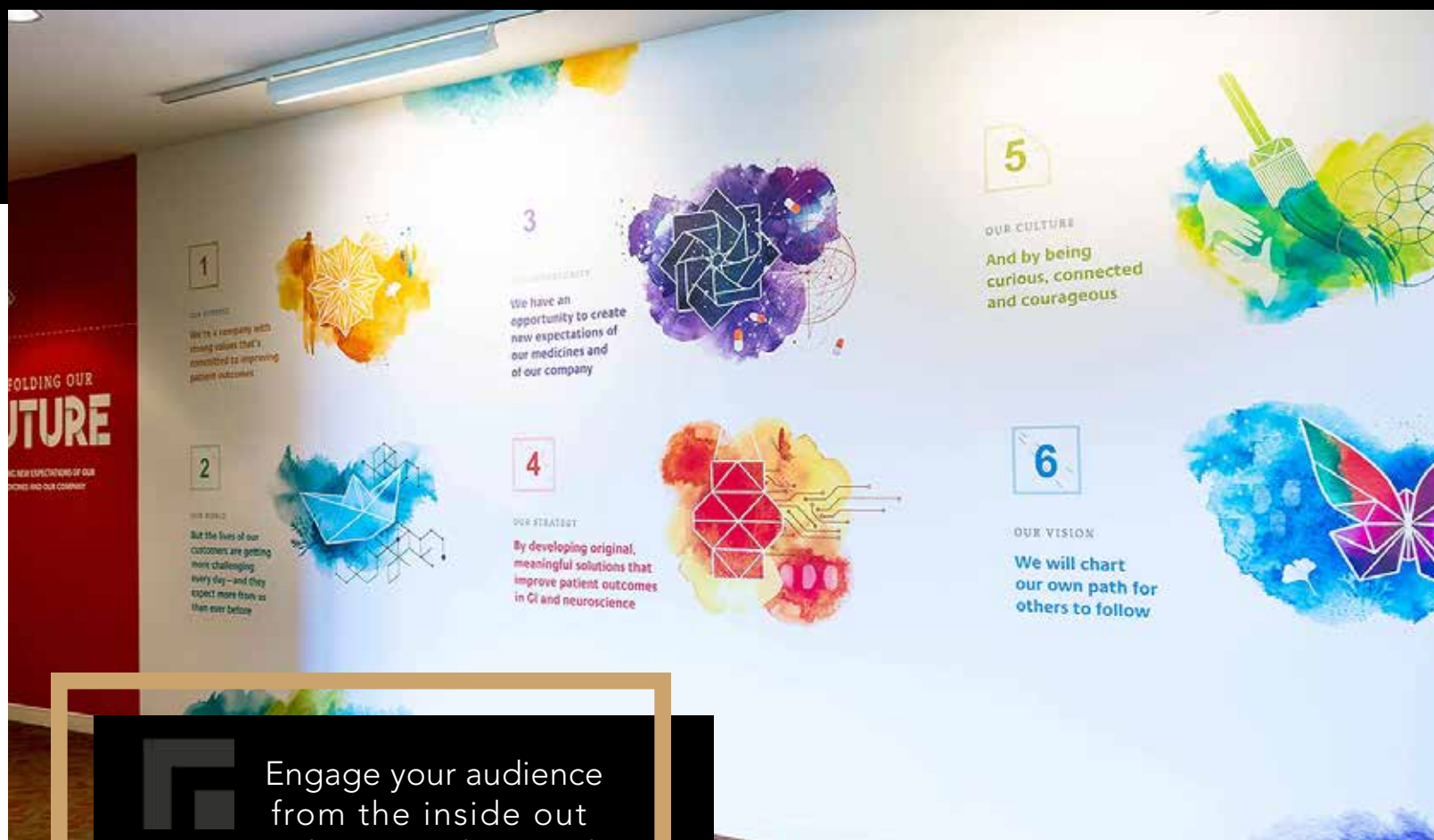
Art Sourcing & Curation



# WALL COVERINGS & WINDOWS





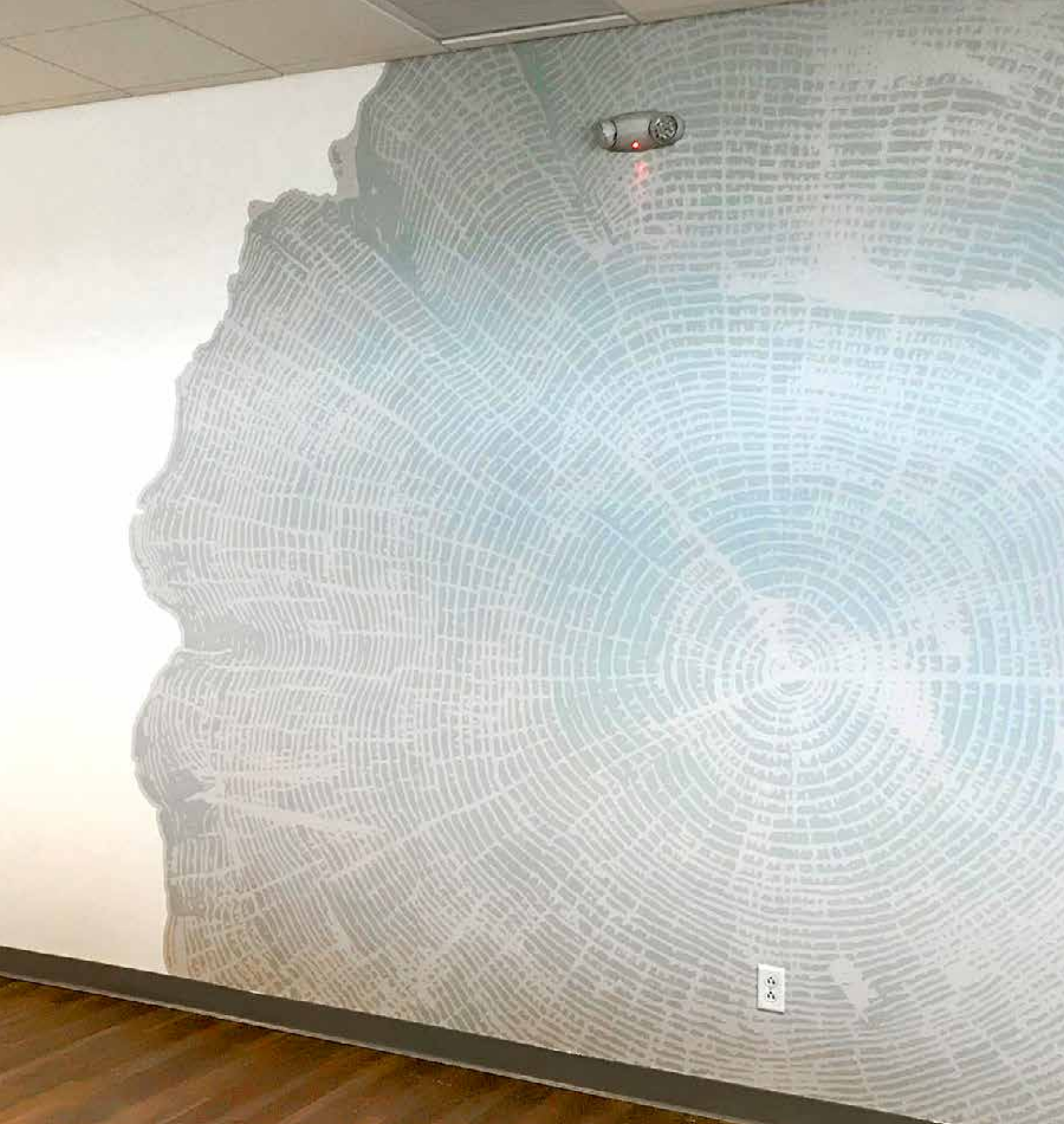


Engage your audience from the inside out with eye-catching and impactful graphics that can be produced in a wide variety of available materials.









# SIGNAGE & WAYFINDING







Take the hassle out of navigating a space with well-designed wayfinding. Clear and concise signage creates engagement and enhances the customer's experience with your business or brand.







# VISUAL MERCHANDISING

---







Attract your customer with branding that's a **WOW...**  
Gain competitive advantage by displaying products that maximize your space and delight your customer.









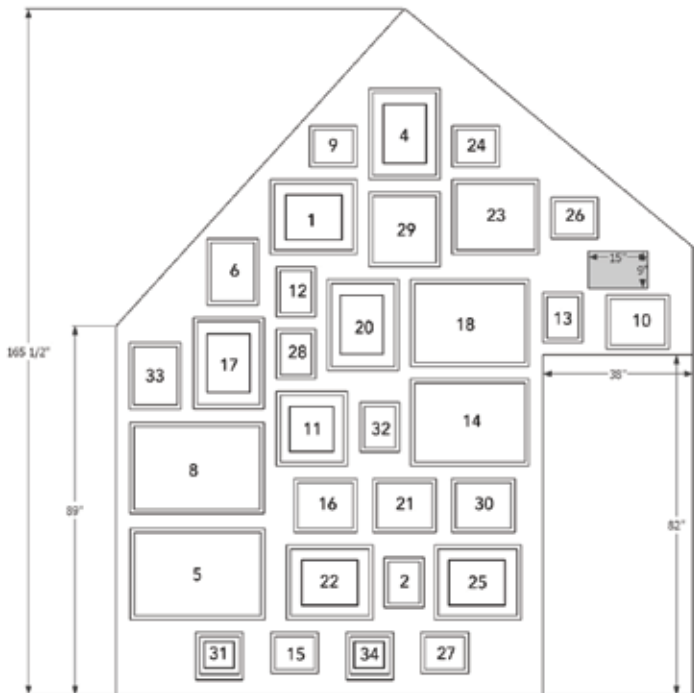


# GALLERY WALLS





Whether it includes treasured family photos, original artwork, or a custom combination of pieces, a gallery wall is a great way to **showcase your personality**. Not sure what would look best? We can also curate and render art for residential and commercial spaces.









[illegible]





Whether it's a corporate or residential project, we can help you **elevate your space** with art created by our in-house team or collaborate with us to curate art suited especially for your needs.





# FRAMING

---

High Volume Frame Production  
Framing Supplies  
Custom Framing  
Specialty & Volume Mats  
Mirrors







# HIGH VOLUME FRAME PRODUCTION

---





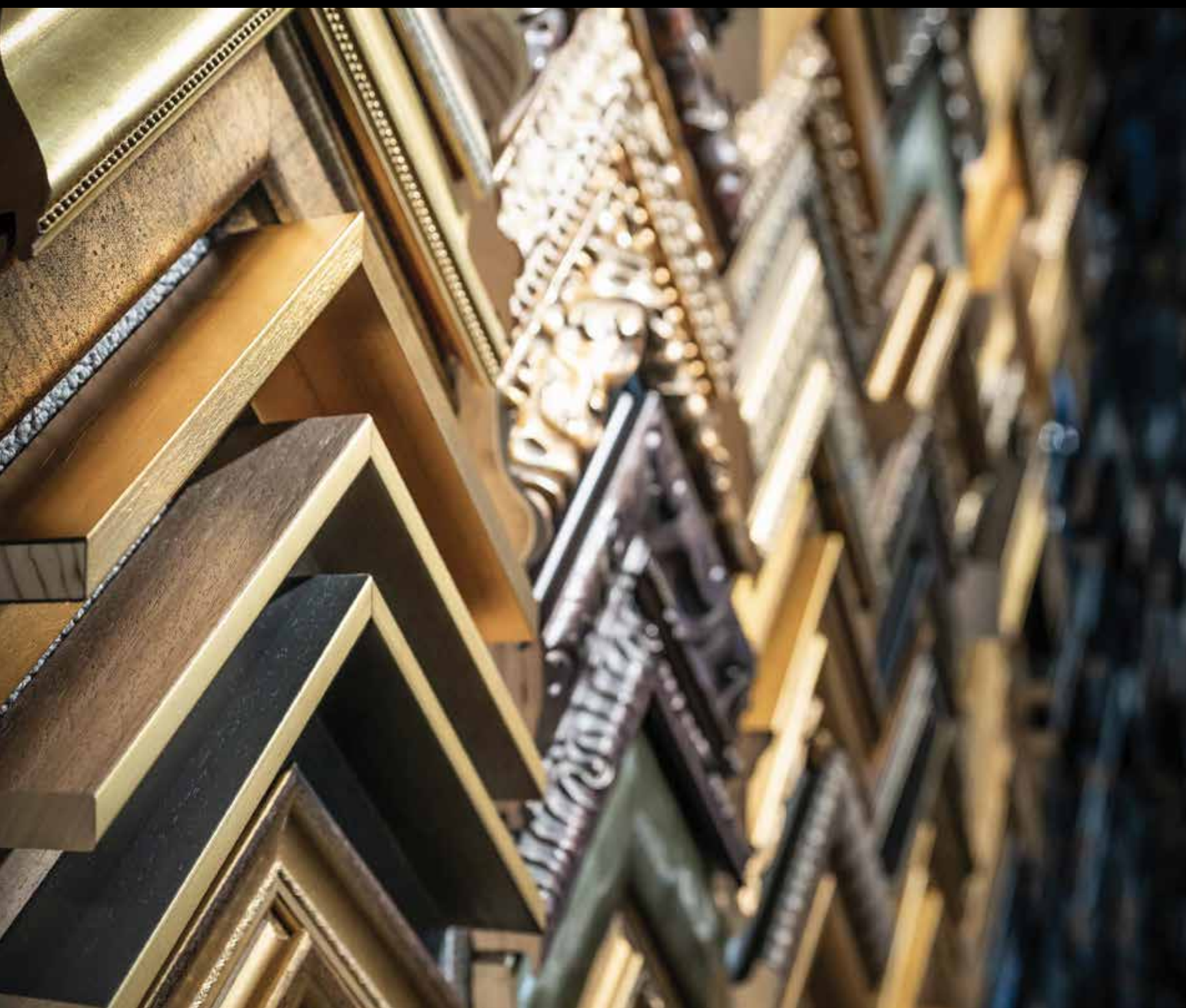


We know how hard businesses have to work in order to gain traction. By choosing to outsource manufacturing to us, you'll enjoy a vast range of benefits, including cost savings and a potential increase in your bottom line. We work hard to produce the **highest quality frames** so you can better serve your customers and focus on the day-to-day operations that truly matter.



# FRAMING SUPPLIES

---







Partnering with businesses and art galleries nationwide, we are proud to offer fast, effective, and quality wholesale framing products to help you best serve your customers. Our **IN-STOCK** wood and metal frame mouldings are available in hundreds of different styles, sizes and colors with easy online ordering. We are a trusted distributor of Crescent, Bainbridge, and Rising matboards along with TruVue glass and acrylic in all sizes to provide you with the best solutions for any project.












 With a combined total of 140 years of framing expertise, our custom framers treat every piece like one of their own. We will work diligently to create the perfect framing solution to highlight and protect the art that matters most to you.







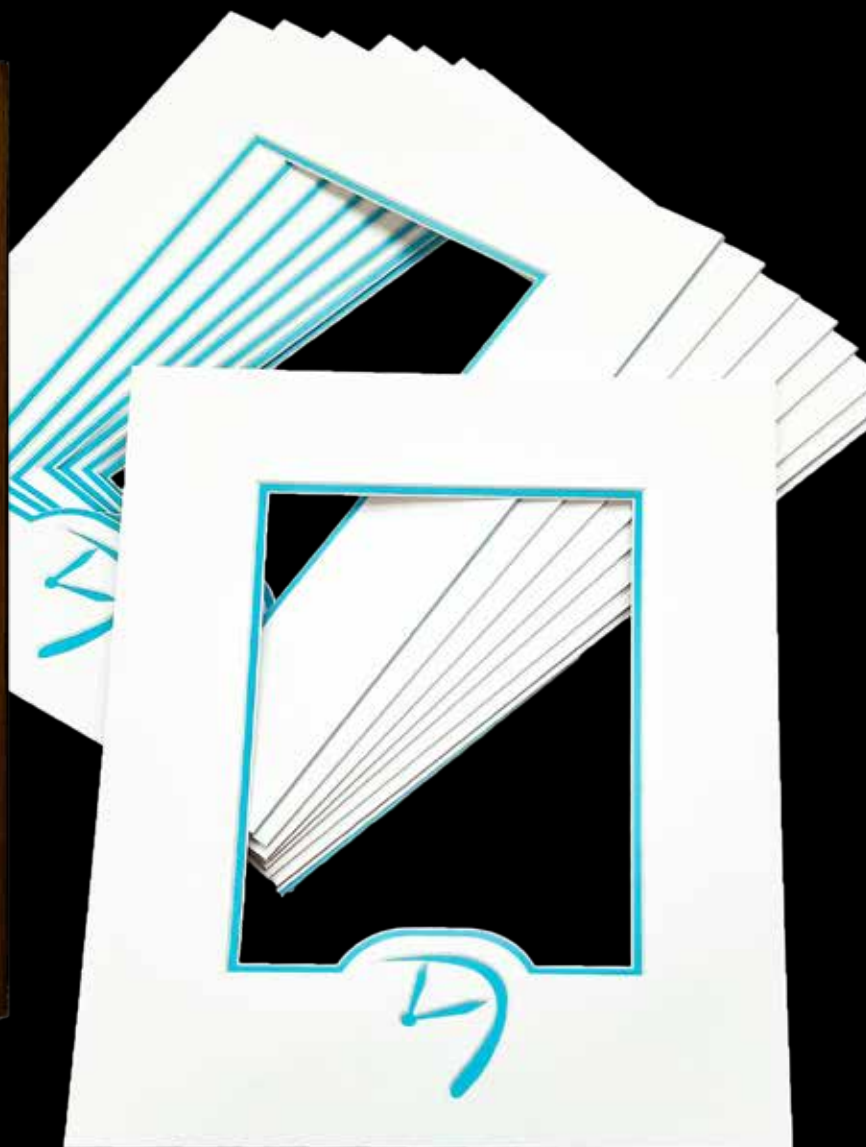




# SPECIALTY & VOLUME MATS

---





Equipped with the **latest and fastest** computerized mat cutters in the industry, we can tackle any large volume cut mats for e-commerce or commercial projects. Need a logo or custom design? We've got you covered there too!



# MIRRORS

---





Custom designed to **reflect your style** – available in standard silver as well as antique finish, bronze, or distressed, straight cut or beveled. Add a unique touch with our acrylic mirrors which we can laser-etch with any company logo, wording or design.



# ACRYLIC FABRICATION

---

Cut-To-Size Acrylic  
Sandwich Frames & Hardware  
Acrylic Décor  
Acrylic Cases & Vitrines  
Custom Acrylic Brackets  
Sneeze Guards & PPE






# CUT-TO-SIZE ACRYLIC

---

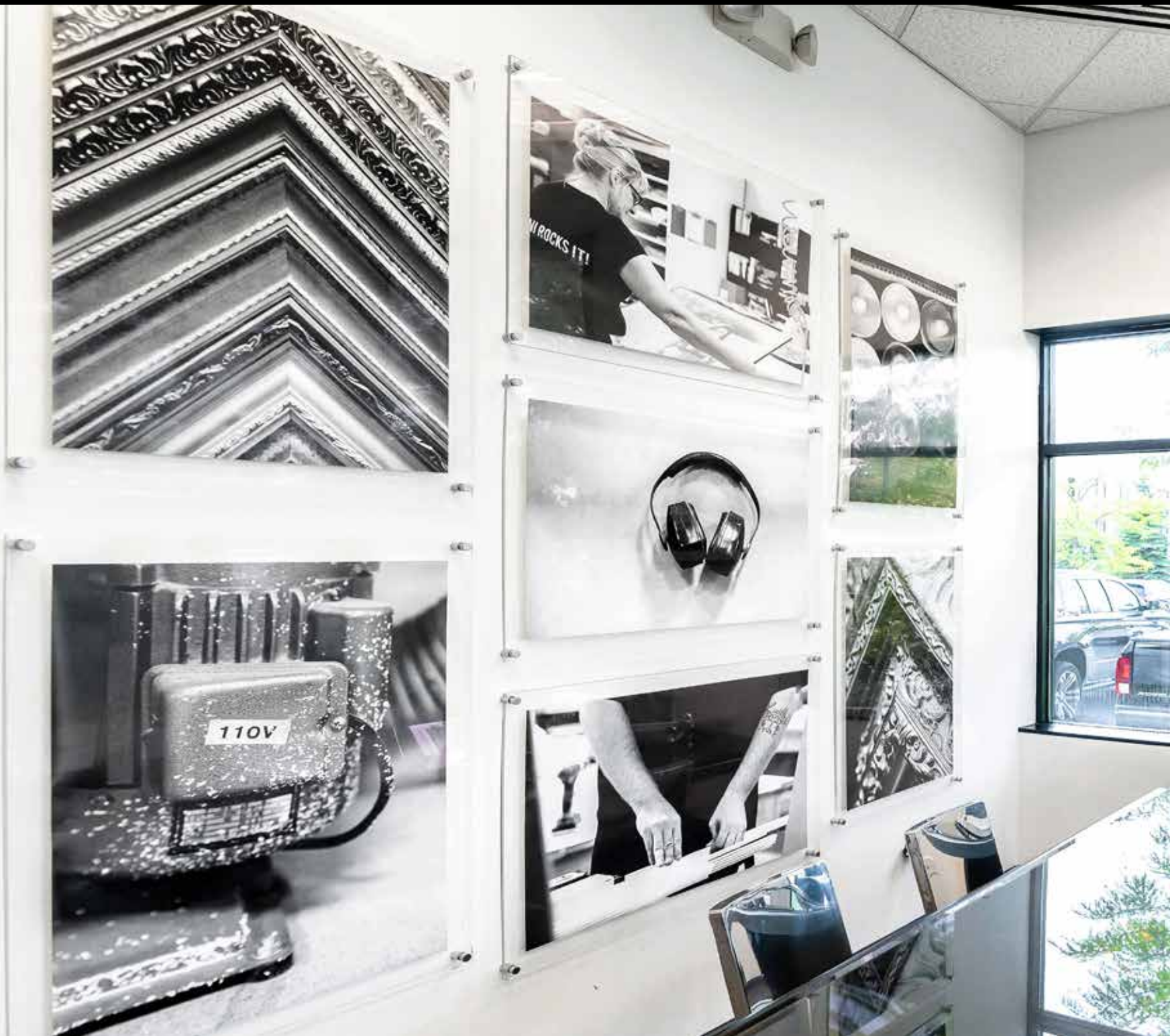




 We stock over one hundred different varieties, colors, and thickness of acrylic - from regular clear FF, UV, and non-glare to frosted acrylic and Optium Museum. Our acrylic can be ordered by the sheet, cut to size, or even custom cut using our CNC. Need a specialty acrylic? Let us find it for you!



# SANDWICH FRAMES & HARDWARE

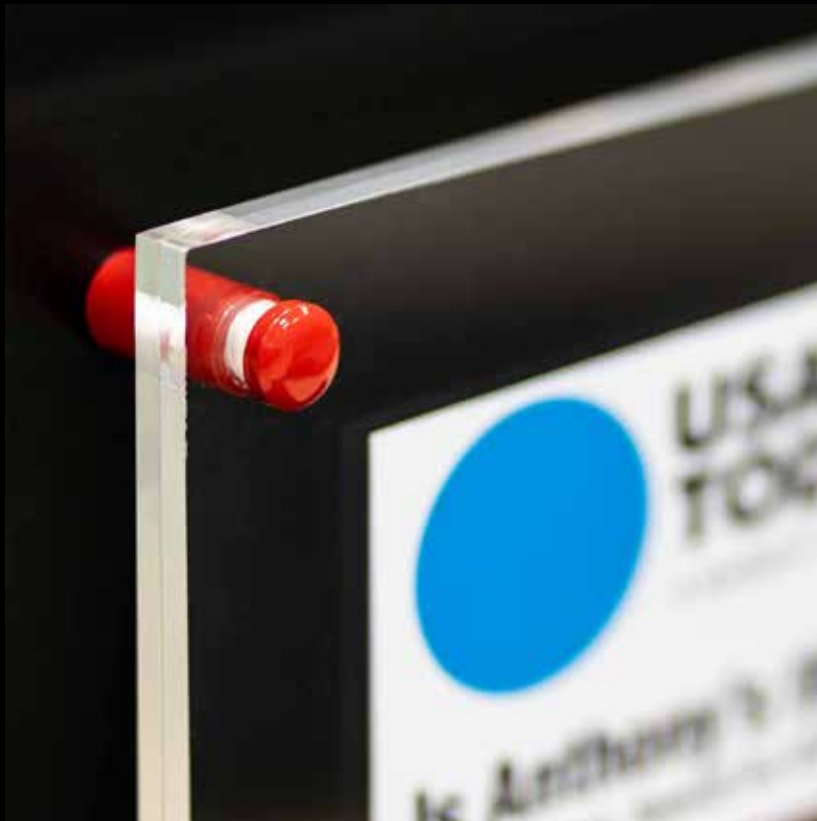


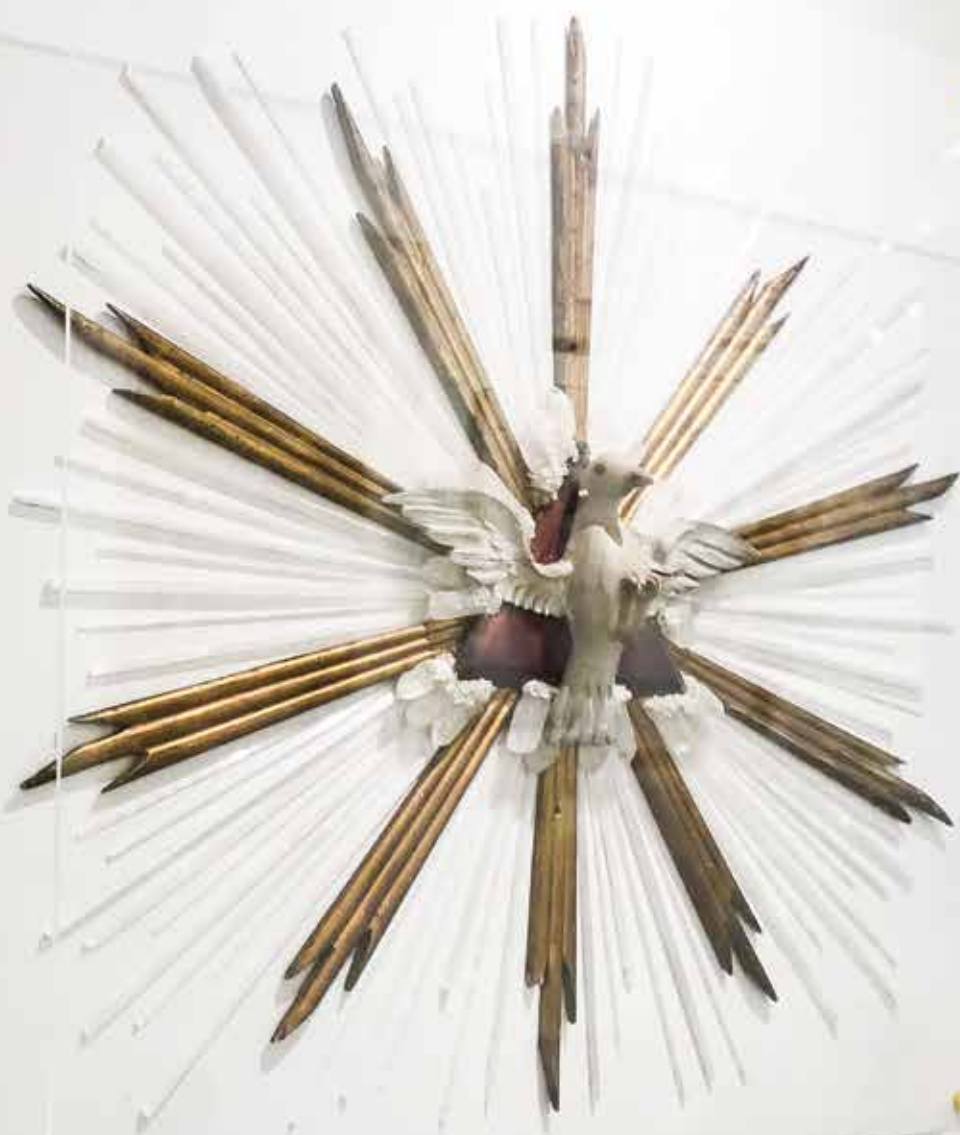


Acrylic sandwich frames are a unique way to display art, photographs, company awards and recognition, and more. These come with 2 or 3 pieces of your choice of acrylic "sandwiched" together using fasteners or stand-off hardware for a **clean, modern look**. We have a wide variety of different standoff hardware available, with other options and even custom painting available!











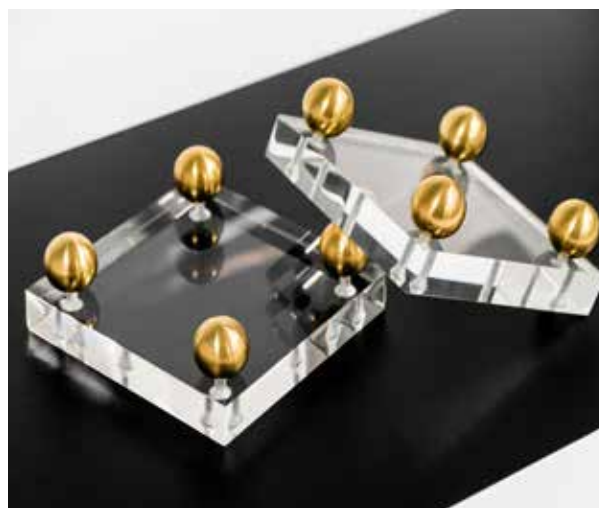
# ACRYLIC DÉCOR







High-end and highly customizable, décor is at its best with the use of acrylic. Utilizing our laser cutting and etching capabilities, along with a wide variety of types and colors of acrylic, these luxe accents are *so chic* and will elevate the look of any room.













# ACRYLIC CASES & VITRINES

---





From sports memorabilia and guitars, to sculptures and artifacts, we design and custom build museum-quality cases and vitrines for all types of unique dimensional items. Our display cases are **made in the USA** with FAST turn-around and a wide range of acrylic and finishing options.







### SENIOR'S BOOTS

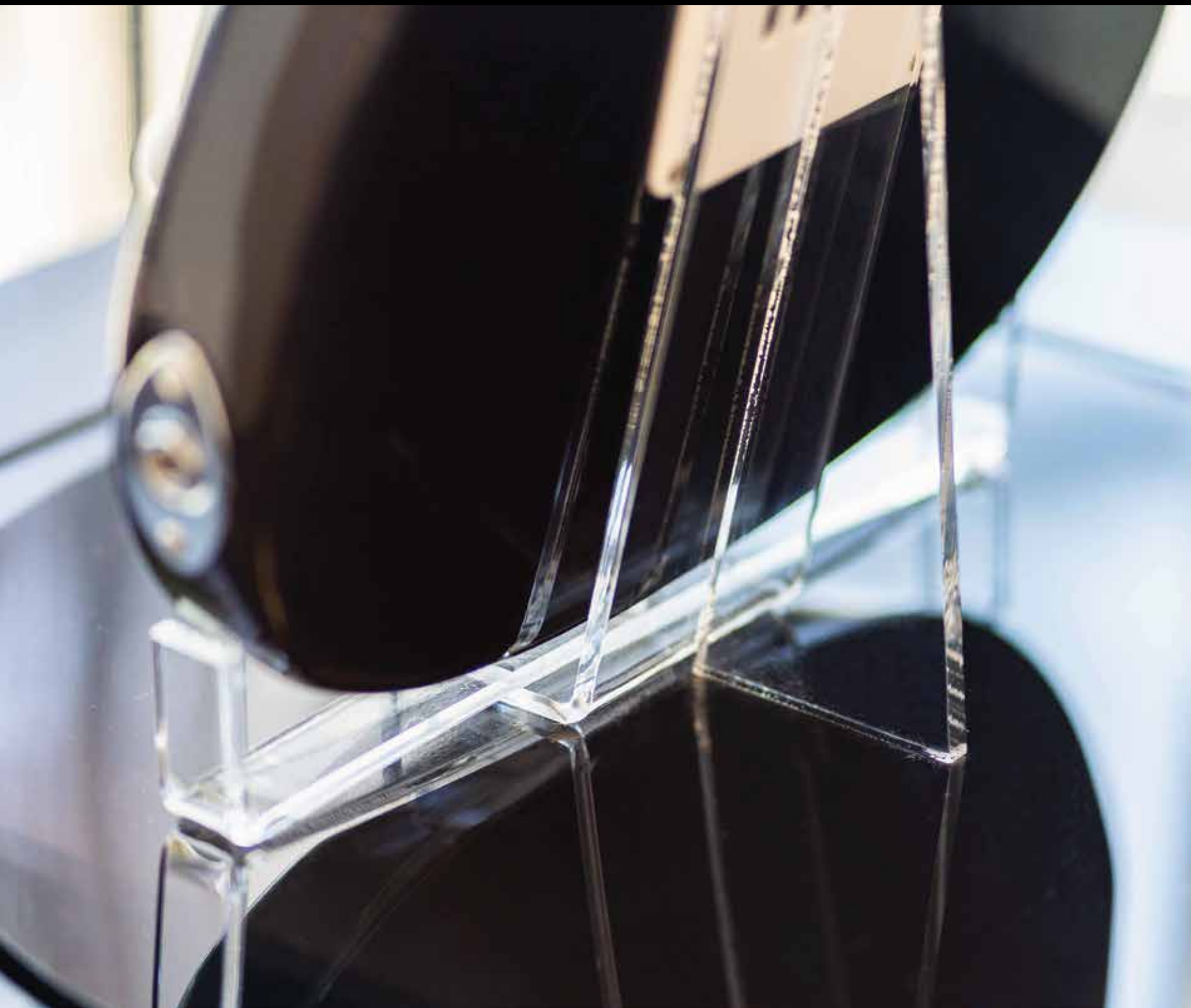
The dark cherry buffalo hide vantage upper is embellished with the original Seniors Group Logo. These were custom-made for Anthony F. Seniors, Sr. by Lucchese Boot Maker in San Antonio, Texas in the late 1990s.

The current Seniors group logo is stitched into the chocolate brown buffalo upper and completed with a full quilt ostrich vantage. These boots were custom made for Seniors in 2002 by Lucchese. Lucchese Boots & Shoes in Oklahoma City, Oklahoma.



# CUSTOM ACRYLIC BRACKETS

---





Our in-house design team is available to assist with custom engineering unique acrylic brackets to help showcase any **three-dimensional** items you wish to put on display.









# SNEEZE GUARDS & PPE

---





We offer PPE acrylic sneeze guards, protective panels, and countertop shields that are **IN STOCK** and ready to ship! Our products are made in the USA and we ship nationwide. Combined with our efficiency and a deep stock of acrylic, we can quickly help you to configure your environment while keeping safety top of mind.













# WOOD FABRICATION

---

Pedestals

Custom Millwork





# PEDESTALS

---





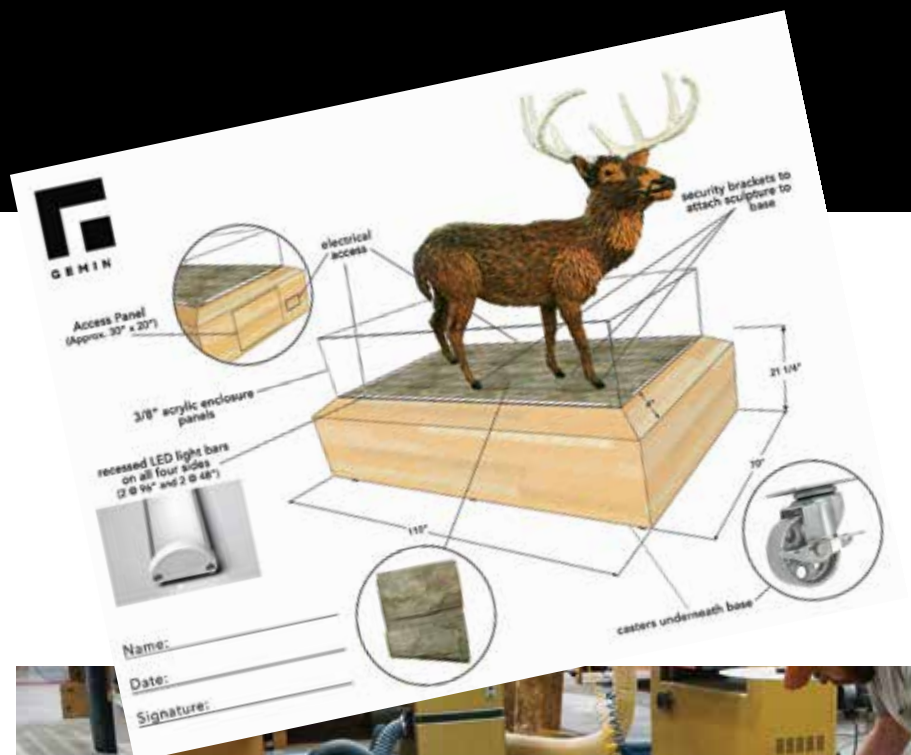
Our high-end pedestals are available in wood veneers and laminates, as well as custom finishes that will add style and class to your exhibition or event. We offer a multitude of **customizable options** and can help you make the best choice to showcase your items.



# CUSTOM MILLWORK

---





Our team can help with designing and rendering anything from a custom hardwood frame or large display, to a piece of furniture or event décor. We offer painted, laminate and wood stained veneers along with a variety of different materials and hardware. No matter what the vision, we will help you bring it to life.















# MORE CAPABILITIES

---

Corporate Gifts & Recognition

Etched Business Cards

Laser Cutting & Engraving

Wide Format Printing

Printed Acrylic

Digital Restoration

Custom Trays

Packaging





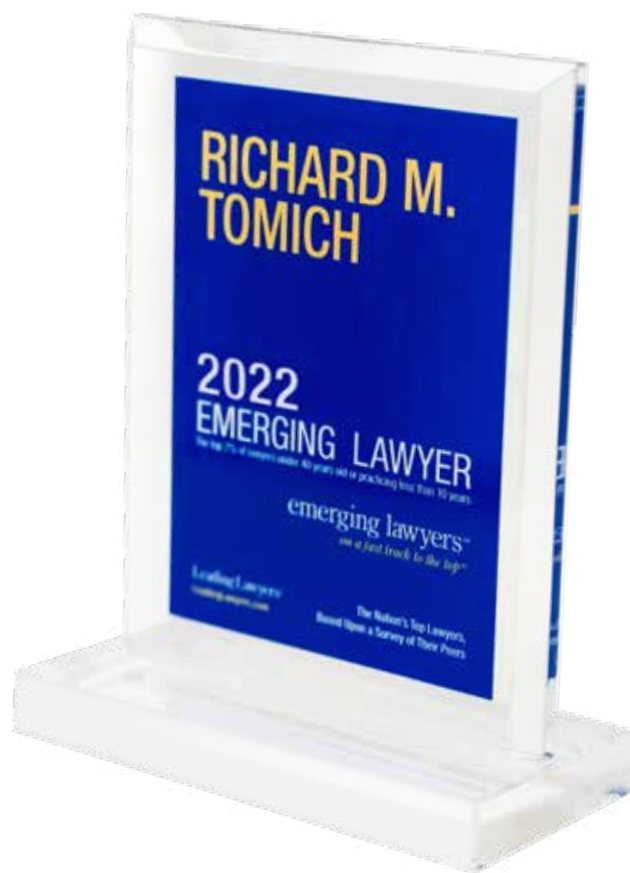
# CORPORATE GIFTS & RECOGNITION

---





One of the most meaningful ways to recruit and retain top talent is by showing work is valued through recognition. We create uniquely designed awards and branded gift items that reflect your business goals and make an impact.





# ETCHED BUSINESS CARDS

---





Now THIS is how you make a lasting impression! We can etch your contact information, company name, even logo on a wide variety of acrylics and materials. Let us help you **stand out from the crowd** and give your clients something they wouldn't dare toss.





# LASER CUTTING & ENGRAVING



Want to give your custom piece a **little more flair**? We can laser engrave on acrylic, wood, or laserable plastics to make any project uniquely yours. Let us help you personalize it with a company logo, name, design, or wording. We can also cut custom shapes to help give your signage or corporate gifts added dimension!













# WIDE FORMAT PRINTING

---

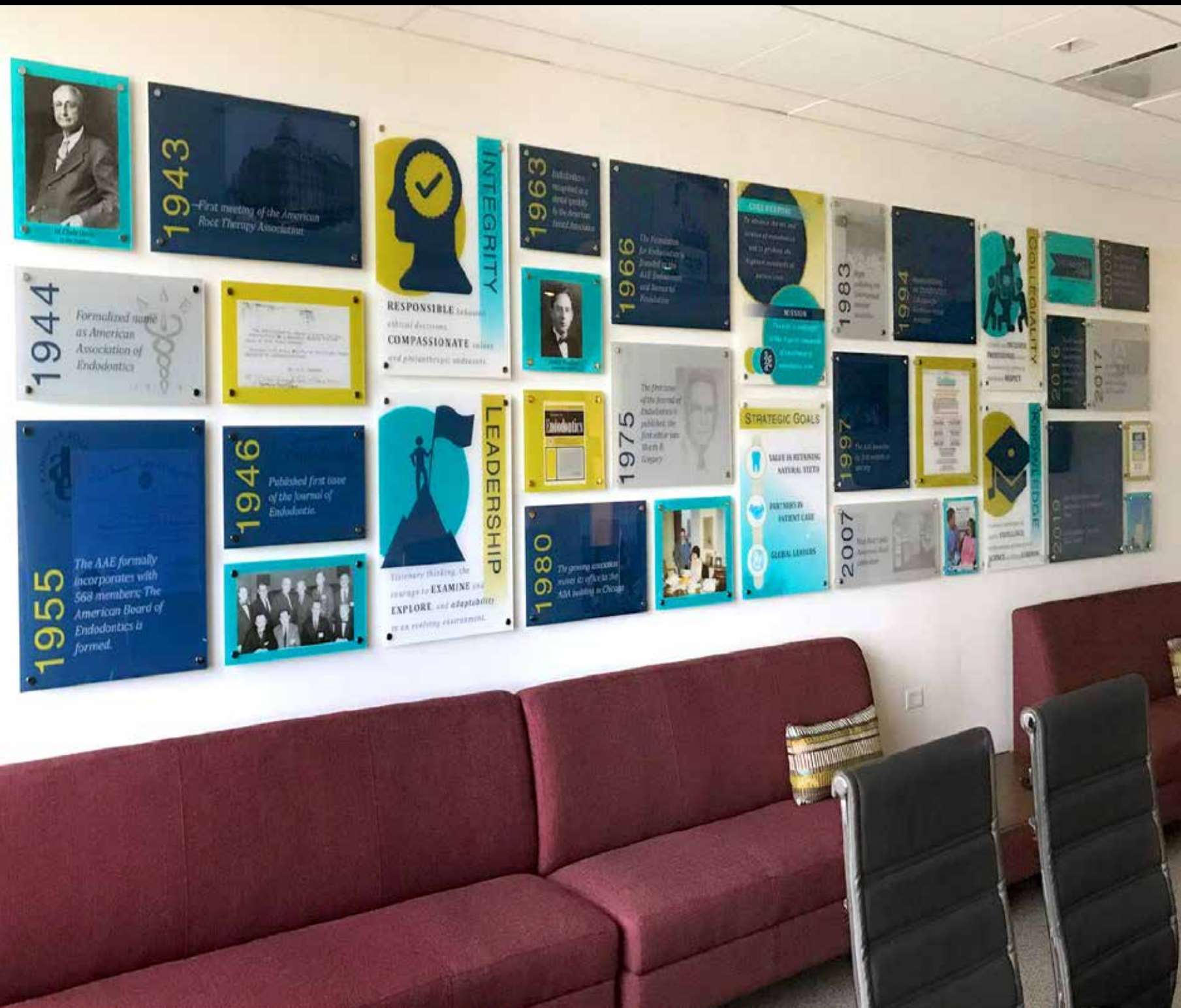




Our wide format, high resolution printers allow us to create art quality prints and giclées on a wide variety of materials including photo paper, matte paper, canvas, watercolor paper, and more. We can even print on matboard! Let us help you design and create a piece of art that showcases your own style and personality.



# PRINTED ACRYLIC





Take your favorite photo, graphic, or piece of art and let us direct print to acrylic for a one-of-a-kind piece. Printed acrylic can be used in combination with stand-off hardware or a cleat on the back to create floating wall art, but can also be used for invitations, signage, client gifts and more!





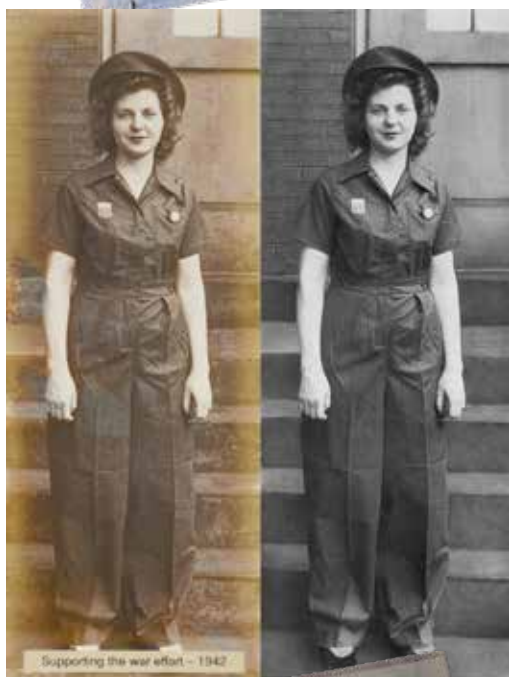
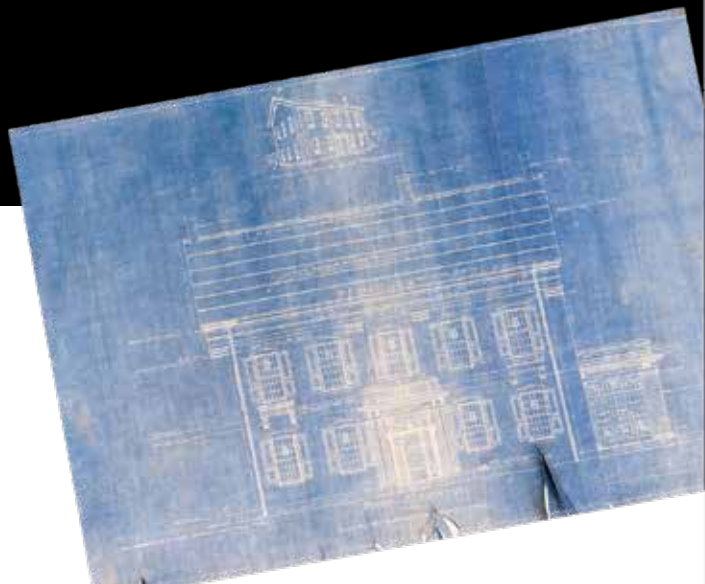
# DIGITAL RESTORATION

AFTER:



BEFORE:





We know how important it is to preserve your most valuable memories. But what do you do when those memories – those heirloom photos, those one-of-a-kind snapshots, those family treasures – are damaged? Let us help! Using state-of-the-art digital technology combined with an artist's touch, we can **breathe new life** into those photos - protecting your memories for years to come.





# CUSTOM TRAYS

---





From luxe to functional - we can create a custom tray in wood or acrylic with etching, patterns, or logo. Whether you use it poolside or in the office, at a special event or to dress up your ottoman, there are hundreds of ways to style up your **signature tray**.







**F** We have 30 years of experience in design, prototyping, and production of gift and specialty packaging. Whether it's custom corrugated cartons, shippers and mailers, shopping bags, stickers and ribbon, decorative tissue paper, or a specialty POP for your brick and mortar, we understand the pace and the seasonality needed for online businesses.





# FINAL MILE

---

Packing, Shipping, & Crating  
White Glove Delivery  
Installation





# PACKING, SHIPPING, & CRATING





We are proud to offer packing, crating, and shipping for items of all sizes and types to ensure flawless and safe arrival. Our wood crates are custom built and come with International Wood Stamp Certification. We **carefully pack** every product to maximize size in order to reduce your overall cost. In addition, we offer distribution, pick and pack services, as well as kitting and assembly.



# WHITE GLOVE DELIVERY

---





Our dedicated team of delivery drivers understands how to work with fragile products, and will ensure that your artwork and displays are always handled professionally, confidentially, and safely. We have our own in-house fleet of trucks which allows for **secure transport** of projects of all sizes.




# INSTALLATION

---





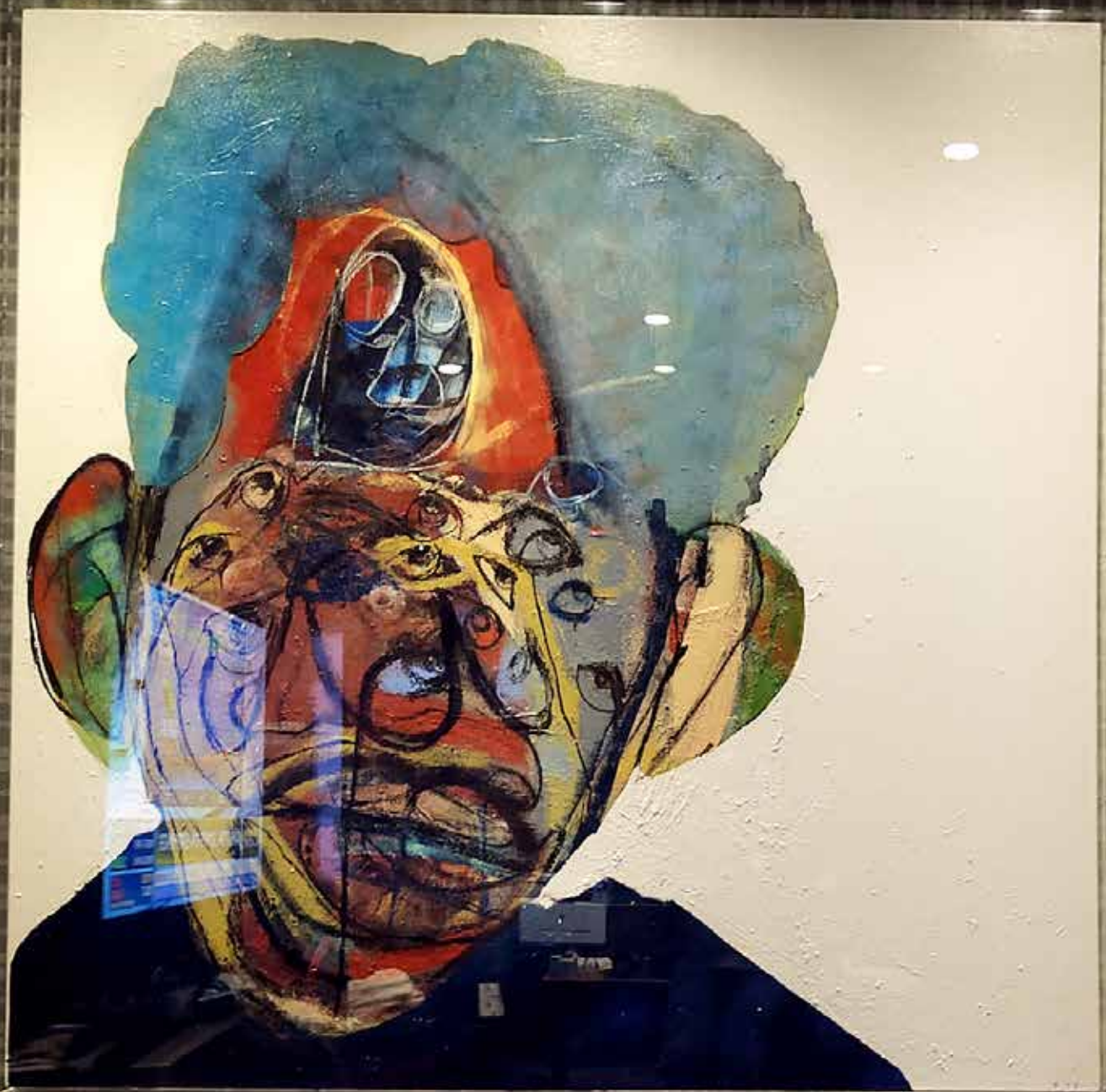
 We can site survey, render, and install everything from oversize artwork and custom gallery walls to museum display cases and acrylic sandwich frames. We pride ourselves in our professionalism and attention to detail, with the **security and safety** of your art at the center of everything we do. This, alongside our framing and display capabilities, makes us your perfect start-to-finish solution.





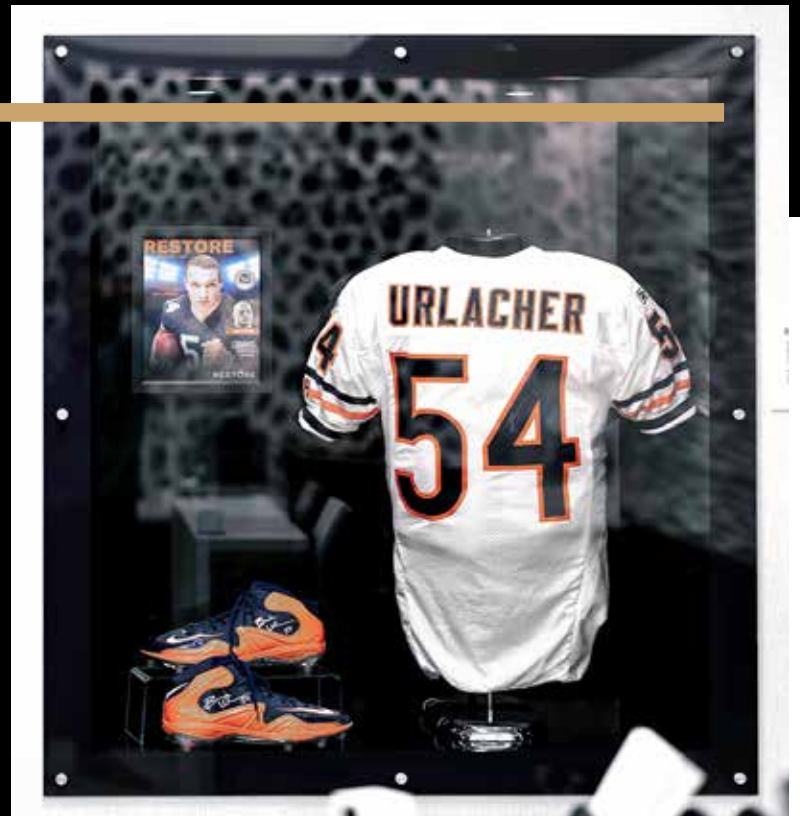


# PORTFOLIO





# RESTORE







# CHICAGO CUBS







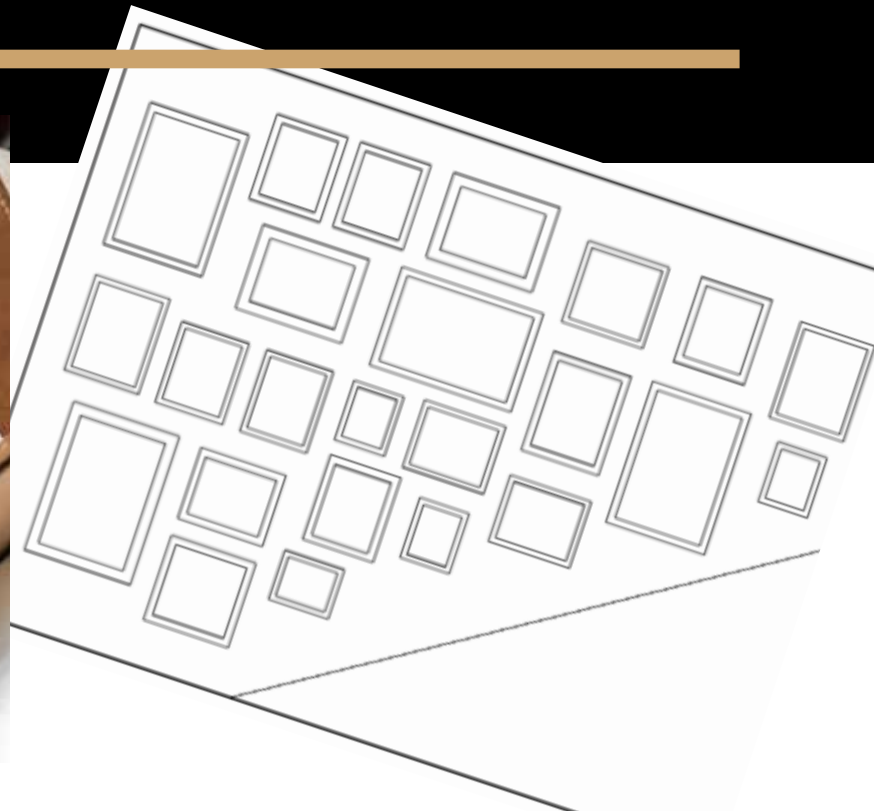
# OAK STREET HEALTH







# GIBSON'S ITALIA











Gemini Builds It! is redefining manufacturing with a team of skilled artisans. We create well-engineered products with an unwavering commitment to quality. Using our decades of experience, a deep stock of inventory, and with collaboration key, we celebrate thoughtful design through every product we make.

WHAT CAN WE BUILD FOR YOU?

---





[sales@geminibuildsit.com](mailto:sales@geminibuildsit.com)  
[geminibuildsit.com](http://geminibuildsit.com)



SHOWCASE  
ACRYLICS

BY GEMINI BUILDS IT

[info@showcaseacrylics.com](mailto:info@showcaseacrylics.com)  
[showcaseacrylics.com](http://showcaseacrylics.com)

